

Switching output transducer

HCY/Z/S-0.5A~500A

HCY/Z/S-V-50V~500V

Used to measure DC or AC current/voltage, output switching signal the measured current/voltage on the primary side and the output signal on the secondary side are electrically isolated.

Feature:

Test frequency:DC,50Hz(400Hz)

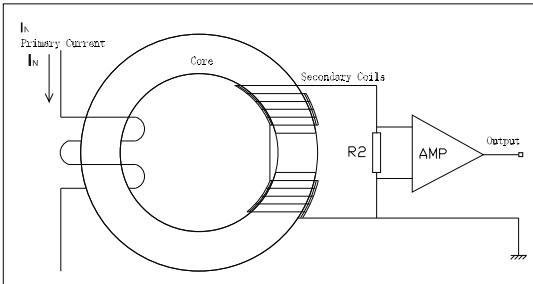
Response time: less than 350mS

Linearity: 0.5%

No insertion loss measured

Used to measure DC or AC current/voltage, output switching signal The primary current is highly isolated from the secondary output signal

Low power consumption, single power supply, wide range of power supply



Working principle:

When the measured current/voltage flows through the conductor, a magnetic field in direct proportion to the current is generated around the conductor. The magnetic field is measured by the secondary coil, and its output voltage is proportional to the measured current. The output voltage is amplified, filtered and calibrated to the required standard signal through the electronic circuit, and the output is turned into the switching signal by the relay

HCY/Z/S/T Series current transducer (switching output)

Part No	Rated input current I _N (A)	f(HZ)	I _F (A)	Relay output (1) Input current < I _N	T _a =25°C	V _c (V)	I _c (mA)	V _i (KV)	T _a (°C)	W(g)	Input hole mm	Fig. No.
HCY-*AE/C	0.5/1/5/10	AC	50A	Triode conduction(low voltage)	±0.2A	24	30	2	-25~+85	50	φ12	9
HCY-*AF/K1	1/5/50/100/200/300	AC	I _N ×200%	normal open	1.0%	24	30	3	-25~+85	105	φ20	1
HCY-*AG/K1	5/50/100/200/300/500	AC	I _N ×200%	normal open	1.0%	24	30	6	-25~+85	360	φ35	2
HCZ-*S/K1	5/10/50/100/200/300	DC	I _N ×200%	normal open	1.0%	24	30	6	-25~+85	240	φ20	3
HCZ-*G/K1	10/50/100/200/400/500	DC	I _N ×200%	normal open	1.0%	24	30	6	-25~+85	360	φ35	2
HCS-*AS/K2	1/5/10/50/100/200/300	AC	I _N ×200%	normal open+ normal close	1.0%	24	60+I _M	2.5	-25~+85	85	φ20	7
HCT-*A/K2	1/2/5/10	DC	I _N ×200%	normal open+ normal close	1.0%	24	60+I _M	2.5	-25~+85	85	terminal	6

HCY/Z/S/T-V Series voltage transducer (switching output)

Part No	Rated input voltage V _N (V)	f(HZ)	V _F (V)	Relay output (1) Input voltage < V _N	T _a =25°C	V _c (V)	I _c (mA)	V _i (KV)	T _a (°C)	W(g)	Input hole mm	Fig. No.
HCY-V-*VS/K1	100/200/300/400/500	AC	V _N ×200%	normal open	1.0%	24	30	2.5	-25~+85	240	terminal	4
HCZ-V-*VS/K1	100/200/400/500	DC	V _N ×200%	normal open	1.0%	24	90	2.5	-25~+85	240	terminal	4
HCZ-V-*VT/K1	500/1000/2000	DC	V _N ×200%	normal open	1.0%	24	90	6	-25~+85	650	terminal	5
HCZ-V-*KV/K2	1/3/5KV	DC	V _N ×200%	normal open+ normal close	1.0%	24	40	10	-25~+85	2500	terminal	8
HCS-V-*V/K2	100/200/300/400/500	AC	V _N ×200%	normal open+ normal close	1.0%	24	60+I _M	2.5	-25~+85	85	terminal	6
HCT-V-*V/K2	50/100/200/300/500	DC	V _N ×200%	normal open+ normal close	1.0%	24	60+I _M	2.5	-25~+85	85	terminal	6

* : Rated input current or voltage # : Rated output current or voltage

(1) Relay output: When the Input current(voltage) < I_N(V_N), Use K1,K2,K3 to indicate the output relay status

Code	K1	K2	K3
Relay output state	normal open	normal open + normal close	normal close

I _N	Nominal current	V _{off}	Offset voltage
V _N	Nominal voltage	T _d	Temperature drift
I _p	Measuring range	L	Linearity
R _M	Measuring resistance	T _r	Response time
I _M	Output current	f	Frequency bandwidth
V _M	Output voltage	T _a	Operating temperature
K _N	Turns ratio	T _s	Storage temperature
X	Accuracy	I _c	Current consumption
V _c	Supply voltage	R _s	Secondary resistance
V _i	Isolation voltage	R _N	Primary resistance
I _{off}	Offset current	W	Weight



Fig. 1

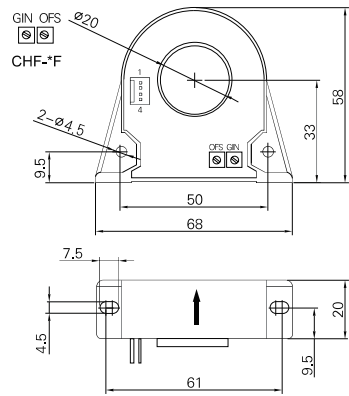


Fig. 2

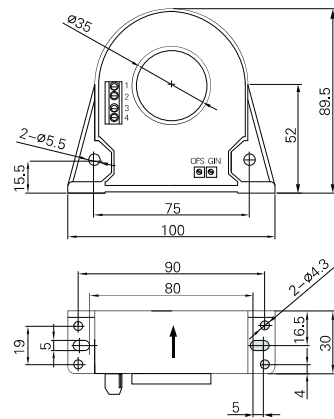


Fig. 3

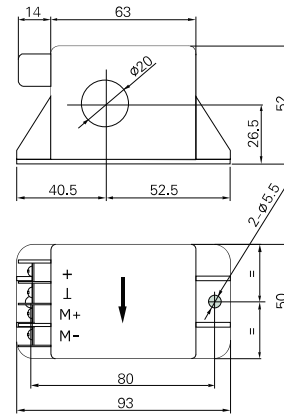


Fig. 4

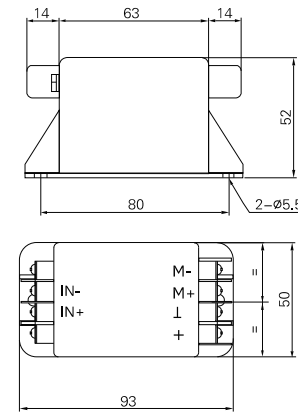


Fig. 5

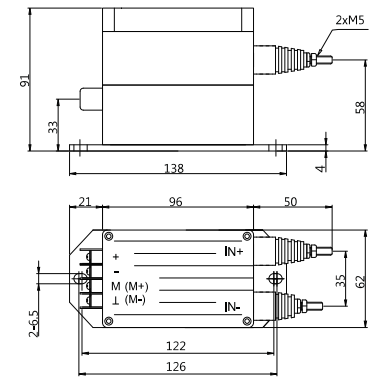
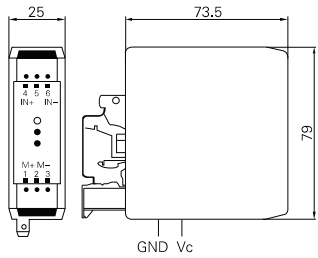
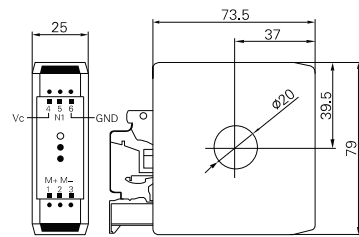


Fig. 6



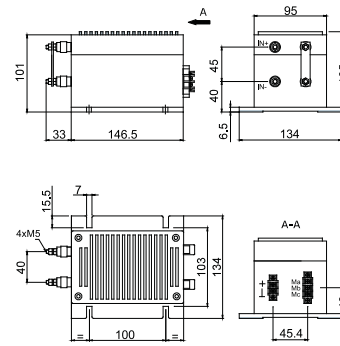
- 1--M+
- 2--M-
- 3--NC
- 4--IN+
- 5--NC
- 6--IN-
- VC--Power supply+
- GND

Fig. 7



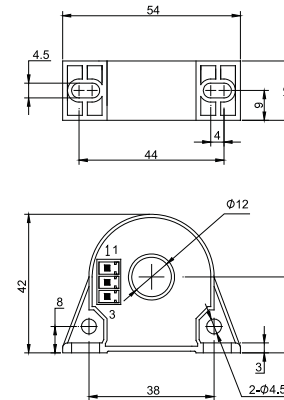
- 1--M+
- 2--M-
- 3--NC
- 4--VC Power supply+
- 5--NC
- 6--GND

Fig. 8



Recommended mounting size 100x120mm

Fig. 9



M	Output
M+	Output+
M-	Output-
NC	NO
IN	Input
IN+(+HT)	Input+
IN-(-HT)	Input-
+VN	Input voltage+
-VN	Input voltage-